



Trans Adriatic
Pipeline

Livelihood
Assistance
and Transitional
Support (Greece)



Contents

1. Introduction	03
2. Background Social Conditions	04
3. Livelihood Assistance and Transitional Support (LATS)	08
3.1 LATS Objective	10
3.2 LATS Eligibility Criteria and Priority Groups	11
4. LATS Interventions	14
4.1 PAP Monitoring - Permanent Land Acquisition Follow-up + Livelihood Needs Assessment	15
4.2 Establishing LATS Initiatives	16
4.2.1 Livelihood Restoration & Strengthening	17
4.2.2 Proposal Eligibility Criteria for Implementing Partners	21
4.2.3 Proposal Evaluation	21
4.3 Transitional Support	22
4.3.1 Screening Process	25
4.4 Land Titling and Registration Assistance Program	26
5. Linkages to project benefits and opportunities	27
6. LATS Disclosure	28
7. Workplan	30
8. Annex 1 – Watch List Date Base	31

Table of Tables

Table 1: Livelihood Restoration Priority Groups	11
Table 2: Vulnerable Assessment Tool	13
Table 3: Work Plan	30

Table of Figures

Figure 1: LATS Goals & Objectives	09
Figure 2: Perception of Economic Well-being of Project-affected Communities	12
Figure 3: Transitional Support Program for Vulnerable PAPs	23

1. Introduction

TAP has prepared **Livelihood Restoration Plans (LRPs)** for each host country. They describe the results of an intensive land easement and acquisition exercise undertaken by TAP and its contractors, and include a record of the commitments, procedures, and actions being taken to compensate the people impacted by land access required by the Project, consistent with national laws and international standards.

The EBRD Performance Requirement 5 stipulates that when a project causes “temporary or permanent loss of income or livelihood through, for example, interruption or elimination of a person’s access to his/her employment or productive assets”, the project will provide the following in addition to compensation:

Livelihood assistance (for example, credit facilities, training or job opportunities) and opportunities to restore, and where possible improve, their income-earning capacity, production levels and standards of living, and;

Transitional support to economically displaced persons, as necessary, based on a reasonable estimate of the time required to restore their income-earning capacity, production levels and standards of living.

International standards also commit a project sponsor to ensuring that those people who may be more adversely affected by the land acquisition process than others, and who may be

limited in their ability to claim or take advantage of compensation and project benefits ('vulnerable'), are identified and appropriately supported.

All land owners, co-owners and users whose land has been acquired permanently and/or temporarily leased by TAP are the targeted beneficiaries of LATS. This includes people who may as a result of restrictions imposed by TAP to physical assets or natural resources that they legitimately own and/or use, experience a temporary or permanent loss of income or livelihood.

In each of the LRPs, a Livelihood Assistance and Transitional Support (LATS) Program to address these requirements is described. This document details the plan for implementing LATS in Greece.



Livelihood Restoration Plans describe the results of an intensive land easement and acquisition exercise undertaken by TAP and its contractors.



2. Background Social Conditions

The Greece segment of the pipeline crosses three regions within the country – West Macedonia, Central Macedonia, Eastern Macedonia & Thrace. It will affect more than **10,000 parcels** of land in **13 Regional Districts** and **30 Municipalities**.

There are approximately **14,000 people** who own and/or use these land parcels residing in **145 communities**. The total Project affected population is approximately **32,500 people**, representing almost **12,000 households**. A summary of the findings from the sample socio-economic survey conducted as part of preparing the Livelihood Restoration Plan (LRP) is presented below.

Amongst the overall Project-affected population, a significantly higher percentage than the national average (**25%**) is over **65 years** of age. PAPs considered within the economically active age group (**20-59 years of age**) represent just over **50%**. The percentage of children and youth **18 years** of age and under is **14%**, which increases to just **24%** for the under **30** population.

In calculating the old age dependency ratio, which is the number of people over **65 years** of age for every 100 people of working age, in **2014** the ratio for the country as a whole was amongst the highest in the world (**31%**). For the Project-affected population it is almost **40%**.

Project-affected owners and users belong to households ranging in size from **1 to 12 people**, with the average being **2.73** people per household, which is slightly higher than the average for the EU.

More than half the Project-affected people (**52% - 4296**) belong to households which have one or two household members, whilst **39%** have **3 or 4 members (3316)**. By cross-referencing age with household size, more than **63% (814)** of the single member households are over **65 years** of age.

In looking at the number of households with large numbers of dependent children, a criteria used by the Greek government to assess eligibility for social support, **3% (211)** of Project-affected households have 3 or more children.

Single parent-led families with dependent children and/or elderly household members constitute **5% (358)** of the Project affected population. The majority (**3.4%**) of these households are led by women.

Of the total Project-affected population, over **97%** indicate that they are literate, with only **2.8%** reporting that they are unable to read or write, which is in keeping with statistics for the country as a whole.

Dis-aggregating the data by gender, region and whether the person lives in a rural or urban area however provides more insight into this issue. When compared with national literacy levels for men and women, the levels within the Project-affected population, particularly for women are lower. From a regional per-spective, differences are also worth noting. Almost **6%** of those PAPs surveyed in East Macedonia -Thrace indicated that they were unable to read or write.

In looking at the education levels achieved by members of the Project-affected households, the greatest percentage (**37%**) has completed primary school, and just over **21%** of Project-affected households have at least one member who has completed college, university, or attended a technical school. However, more than **8%** have none or just some primary school, which is double the percentage for Greece as a whole.

Until 2008, Greece experienced strong economic and GDP growth, however, the economy went into re-cession following the crisis in 2008, and the economy contracted by **2%** in 2009 and a further almost **5%** in 2010.



It is estimated that since the beginning of the crisis until now, the GDP has dropped by **25%**. Eurostat figures indicate that between 2007 and 2012, household income has dropped by one third, which on average amounts to **4,400 Euros** per person. The Greek economy remains extremely fragile, as uncertainty related to the reform programme and deteriorating liquidity conditions have undermined business confidence and investment.

The areas crossed by the pipeline are considerably more rural than the regions as a whole and although municipal economies are mixed, agricultural production together with animal husbandry are important activities in the Project-affected area.

Amongst the Project-affected population, the greatest portion of Project-affected people (**6,433 - 35%**) describe their primary occupation as 'retired'. Almost **30%** are self-employed with the bulk (**20% - 3,623**) employed in farming, **11%** are private sector employees, **10%** (1782) perform unpaid work in the home and a further **10%** (**1747**) consider themselves unemployed and actively seeking employment. More than two-thirds of Project-

affected households (**63%**) rely on one source of income. The most commonly cited source is pensions, followed by self-employment and waged employment, which was reported by 43% and **37%** respectively.

More than half the Project-affected households surveyed report surviving on less than 900 euros per month. However, when income data was compared with reported expenditures, almost half of the surveyed population indicated that they have expenditures which far exceed their income. By focusing on the expenditures, and comparing this data with relative poverty thresholds set for Greece (**5,000€** per adult per year, or **10,520€** for a family of four), **37%** of the sampled households are living near the poverty threshold.

With respect to how people spend their income, **50%** indicated that their main expenditure was on food, **28%** ranked energy for cooking, lighting and heating as number one with agriculture related expenditures and loan/ mortgage payments considered the biggest expenditure by just **7%** and **5%** respectively. Over **3%** consider medical expenses as their greatest expenditure.





Project-affected land owners/users growing perennial crops the most commonly affected include clover, peach, cherry, olive, almond, apple, figs and grapes.



In terms of other owned assets, **73%** of the Project-affected population who participated in the socio-economic survey report owning an automobile and **37%** a tractor.

Affected land parcels range in size from less than 1 stremma (1000 square metres) to more than 100, with the majority of PAPs (**79%**) having land holdings of 10 stremmata (1 hectare) or less. Most of the Project-affected population report owning/leasing land outside of the Project area, **22%** of PAPs however indicate they rely solely on the parcel which will be affected by TAP.

The majority of Project-affected land parcels have been cultivated with annual crops (**90%**), of Project-affected land owners/users growing perennial crops the most commonly affected include clover, peach, cherry, olive, almond, apple, figs and grapes.

In terms of livestock, only **25%** of the sampled Project-affected households own livestock, with the most common being poultry, followed by sheep, and to a lesser extent cattle, goats and pigs.

Most people living in Greece currently consider themselves 'economically vulnerable'. Almost **75%** of the Project-affected households who participated in the sample socio-economic survey indicated that they did not go on vacation last year and more than one third are considered to be hovering close to the poverty threshold. Almost a quarter of surveyed households (**23%**) said that the quality and/or quantity of their food had reduced considerably over the past twelve months.



3. Livelihood Assistance and Transitional Support (LATS)

TAP's compensation entitlements have been designed to compensate fairly for Project land easement and acquisition impacts. Compensation entitlements alone however will not guarantee livelihood restoration for all Project affected households. For the majority of people whose land is being leased through the Project construction period with long term restrictions in Zone A, and who cultivate annual crops, restoration of livelihoods will depend on prudently managed cash compensation and effective land reinstatement. For those Project affected people (PAPs) who are land users not owners, whose land is being permanently acquired and/or who cultivate deep rooted perennial crops, livelihood restoration will be more challenging.

The goal of the Livelihood Assistance and Transitional Support (LATS) program is to establish interventions which will ensure that all affected people, particularly those at an elevated risk of experiencing negative impacts to their livelihood, are able to restore their income stream to pre-Project levels, and where possible improve it. LATS has two distinct components; livelihood assistance and transitional support.

The Transitional Support (TS) component will focus on identifying, monitoring and providing appropriate

support to households within the Project-affected population deemed 'vulnerable' and a higher risk of being disproportionately affected by LEA.

The goals and objectives of LATS are illustrated in Figure 1.



Livelihood Assistance and Transitional Support (LATS) program is to establish interventions which will ensure that all affected people.





Figure 1

3.1 LATS Objective

LATS will encompass activities designed to achieve the following objectives:

Provide support and incentives for PAPs, particularly those at an elevated risk of experiencing negative impacts as a result of LEA, to invest in and strengthen their agriculture-based and busi-ness-based livelihoods.

Establish an effective monitoring system of all PAPs, beginning with follow-up in areas where land has been permanently acquired to assess whether affected owners/ users have been able to replace their land and re-establish their livelihoods, and whether additional assistance is required and what form it might take.

Identify and monitor Project-affected people/households considered 'vulnerable' and at an elevated risk of experiencing economic hardship as a result of land access by TAP, and provide appropriate transitional support.

Ensure all Project-affected people are well-informed and able to access wider Project benefits and opportunities, i.e. TAP Social and Environmental Investment (SEI) initiatives, direct and indi-rect employment related to pipeline construction.





3.2 LATS Eligibility Criteria and Priority Groups

All land owners, co-owners and users whose land has been acquired permanently and/or temporarily leased by TAP are the targeted beneficiaries of LATS. This includes people who may as a result of restrictions imposed by TAP to physical assets or natural resources that they legitimately own and/or use, experience a temporary or permanent loss of income or livelihood.

The Greek segment of the pipeline is **550 kilometers** in length, traversing three regions and 30 municipalities. Land easement and acquisition (LEA) activities directly affect almost **12,000 households** living in **145 communities**. In light of the Project footprint and scale of LEA impacts, LATS will be targeted to geographic areas and priority groups within the Project-affected population determined to be at an elevated risk of facing challenges in restoring and strengthening their livelihood. These priority groups include PAPs deemed 'vulnerable', and those identified in **Table 1**.

**Table 1
Livelihood Restoration Priority Groups**

Livelihood Assistance Target Groups	Greece
Project-affected land owners with land-based livelihoods whose farms have been permanently acquired for the compressor+ block valve stations.	140 PAPs
Perennial crop / fruit tree farmers affected by the pipeline ROW who will be restricted from cultivating trees and deep-rooted perennial crops within Restriction Zone A.	371 parcels (612 known owners, 409 users)
Project-affected people but are unable to secure sufficient documentation to establish legal entitlement to the affected land parcel they farm.	3.000 PAPs (estimated)

Figure 2 maps village areas in a segment (Maronia-Sappes, Komotini, Iasmos and Avdira municipalities – East part) along the pipeline route, and colour codes them based on the level of perceived economic well-being by Cadastral Survey Offices (CSO) and C&AI &, SLA staff.

Those villages colour coded pink or orange, are considered to be the most severely economically challenged, yellow indicates a me-diocre or moderate economic situation, and green and blue a good or very good economic situation, re-spectively.

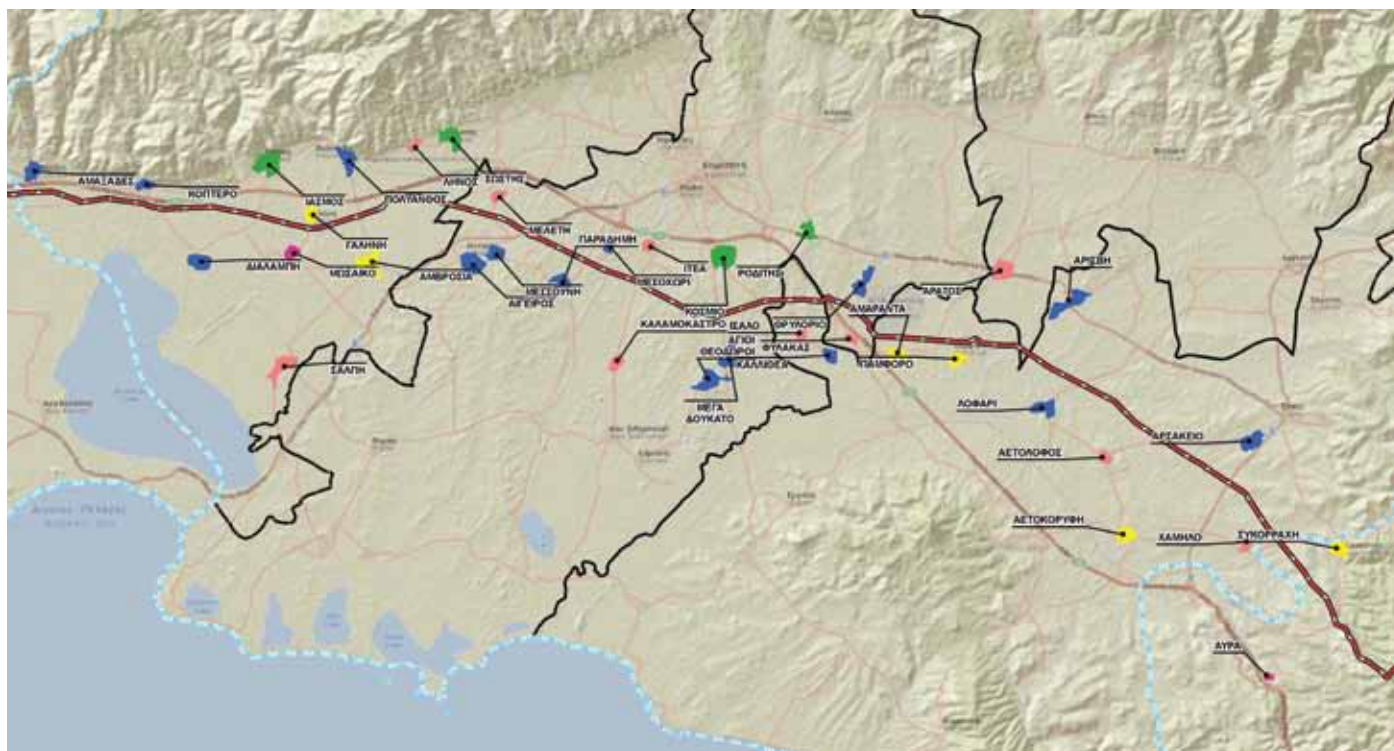


Figure 2
Perception of Economic Well-being of Project-affected Communities

Data analysis has been finalized and maps have been prepared for the complete route of the pipeline in Greece. Corresponding maps with population figures for each village have also been created.

The next step is to integrate this information with the geographic distribution of affected land parcels and project-affected people, and areas where PAPs affected by TAP have also been previously affected by DESFA. This database will assist in finalizing the identification of priority areas for targeting LATS.

To further assist in identifying those households amongst the Project-affected population at an elevated risk of experiencing negative impacts as a result of LEA, a tool to assess levels of vulnerability and resilience has been developed (**Table 2**).

It is based on vulnerability factors identified by the European Investment Bank (EIB) in their Environmental and Social Handbook (2014), and will be used to categorize PAPs into high (**40% or greater**), medium (**20-40%**) and low risk groups (**below 20%**).

“ This database will assist in finalizing the identification of priority areas for targeting LATS. ”

PILLARS	S/N	VULNERABILITY PARAMETERS	Weights (%)	100
PAH's Exposure to Risk / Adverse Impacts (total weight = 40)	1	30% or more of the land parcel is affected by TAP (Working Strip)	20	40
	2	Farming is household's primary occupation	7.5	
	3	Affected parcel is cultivated with perennial crops	2.5	
	4	Reside in rural areas (communities with less than 3,400 inhabitants – Cencus 2011) close to the construction area (approximately within a +- 5km corridor from the pipeline footprint)	5	
	5	Users of the impacted parcel have access to other land which is less than < 0,5 ha	5	
PAH's Sensitivity to Risks Impacts (total weight = 30)	6	Reported household income at or below national poverty line	10	30
	7	Household head has three or more dependents (i.e children under 18 years of age and/or elderly dependants over 65 years of age)	2.5	
	8	Household head is 65 years of age or older	2.5	
	9	Household head is 65 years of age or older and widowed/living alone	5	
	10	HH has members who are chronically ill and/or disables	5	
	11	Household head is a single parent with one or more children under 19 years of age	2.5	
IPAH's Adaptive Capacity (total weight = 30)	12	HH has no other land holdings and the owners are also cultivators (users) of the affected parcel	10	30
	13	HH has limited material assets (i.e farm equipment, vehicle, livestock)	2.5	
	14	Outside of income from affected Ind parcel and gov't pension, HH has no other sources of income / remittances	10	
	15	HH has poor access to basic infrastructure + services (e.g. resides in a community which rates low on the Community Living Condition Scale)	5	
	16	Head of HH has no or limited formal education	2.5	

Table 2: Vulnerable Assessment Tool

4. LATS Interventions

The following sections outline the different components of LATS and the projects/initiatives which will be made available to people affected by TAP's land easement and acquisition activities.



4.1 PAP Monitoring - Permanent Land Acquisition Follow-up & Livelihood Needs Assessment

An effective system of monitoring all Project-affected people is being established, beginning with Project-affected owners and users affected by permanent land take required for the compressor and block valve stations. Each PAP whose land has been permanently acquired will be contacted as part of a follow-up study.

The purpose of the study will be to document PAP's success in accessing replacement land or investing in alternative land holdings they already own, and the progress they have made in re-establishing livelihood activities on replacement land.

Project-affected people/ households deemed to be facing exceptional challenges and who might qualify as a 'vulnerable PAP' will be noted and referred to the Transitional Support Program for inclusion on the Vulnerable Watch List.

The study will also assess whether PAPs whose land has been permanently acquired require additional livelihood restoration assistance and what form(s) it might take. This will then be integrated into LATS.

This study will be undertaken at the latest in the fourth quarter of 2016.



Who might qualify as a 'vulnerable PAP' will be noted and referred to the Transitional Support Program for inclusion on the Vulnerable Watch List.





4.2 Establishing LATS Initiatives

Additional livelihood assistance and training aimed at ensuring livelihoods are restored and where possible strengthened, will be achieved by soliciting proposals from qualified implementing agencies within Greece. Preliminary results from the partner assessment work undertaken by TAP indicate that there are a number of strong organizations experienced in livelihoods and agriculture.

4.2.1 Livelihood Restoration & Strengthening

The livelihood assistance 'Call for Proposals' will encourage submissions which fall into the following four categories.

Land Parcel Preparation Projects

Land Parcel Preparation Projects (LPPPs) which provide displaced households with previously cultivated land parcels who intend to continue farming following land reinstatement, with appropriate assistance to support their efforts to rapidly resume farming. This could include provision of soil analysis and fertilization advice, discounted access to improved farm inputs and strategies for enhanced irrigation.

Perennial Tree Growers Project

Proposals in this category will focus on the livelihood needs of Project-affected people who rely on the cultivation and harvesting of perennial trees, and who will be restricted from replanting these deep rooted trees within the pipeline safety zone on their land parcel. Each interested PAP will be entitled to a consultation with an agricultural expert, who will assist them with preparing an individualized livelihood restoration plan which explores a number of strategies:

- **Options** for cultivating alternative crops which are not deep rooted but of similar economic value within the safety zone area of their affected land parcel;
- **Enhancing** the productive (and/or market) value of remaining perennial trees on their affected land parcel;
- **Feasibility** of cultivating (or enhancing existing cultivation) on other land holdings accessible to the PAP outside the Project area;
- **Availability** of existing (or forthcoming) government and/or EU funding for agricultural initiatives which the PAP might qualify for and assistance in preparing and submitting applications.



“ Proposals in this category will focus on the livelihood needs of Project-affected people.

”



Agricultural Improvement Projects

Agricultural Improvement Projects (AIPs) initiated in key areas along the pipeline route to provide technical support and training for interested affected households to adopt improved agricultural practices on their land parcels.

AIPs would provide training to farmers to learn and work with improved agricultural practices in the period prior to their land parcel being reinstated and returned to them.

Following land re-instatement, participating farmers would be provided with improved inputs and additional training to ensure the rapid adoption of improved practices.

AIPs would need to be tailored to the specific community context and the agricultural needs of PAPs along the pipeline route where they will be established, **but possible components include:**

- Training of farmers (and training the farmers to become community farmer trainers) in improved farming techniques, for example in precision agriculture
- Establishment of household demonstration farms to showcase improved agricultural techniques and inputs
- Technical support to displaced farmers
- Assistance with accreditation and certification of agricultural/livestock related products
- Avenues for accessing upgraded farm equipment + improved agricultural inputs LEA-Affected Household Business Development Grants



AIPs would provide training to farmers to learn and work with improved agricultural practices in the period prior to their land parcel being reinstated and returned to them.





LEA-Affected Household Business Development Grants

With this program, members of eligible LEA-affected households would be provided with small micro household business development grants intended to capitalize on the most promising household investments. Micro-grants would enable those households that are able to demonstrate a clear understanding of financial management and small business skills to access additional capital to expand existing or develop new micro-household business ideas.

By focusing on those displaced households that have demonstrated financial management capacity, the success rate of micro-grants would be greatly increased while providing other displaced households with

community based models of successful household businesses. The micro-grants could be structured in a step manner that provide an initial start-up grant for selected households with the possibility of a larger development grant based on the performance and success of the first grant.

The awarding of a household grant would be tied to attendance in specialized training around business and financial management. Priority would be given to businesses proposed by women, youth, and where possible vulnerable persons within LEA-affected households. A detailed eligibility and selection process will be developed and clearly communicated to Project affected households.





4.2.2 Proposal Eligibility Criteria for Implementing Partners

Organizations eligible to submit proposals to be implementing partners of these initiatives must be a legally registered entity within Greece, with demonstrated capacity to execute the program they are proposing and able to meet TAP's Compliance, HSSE and Code of Conduct requirements.

4.2.3 Proposal Evaluation

Evaluation criteria will include the extent to which proposals meet the following:

- Targets the aforementioned priority groups from within the population of people affected by LEA;
- Provides incentives to PAPs to invest their compensation money into restoring, strengthening and expanding their current livelihood activities;
- Contributes to the improvement of agricultural productivity, particularly in areas where LEA impacts are elevated and with priority groups within the Project-affected population (Table 1);
- Demonstrates that the livelihood-related needs and interests of women and youth within Project-affected households have been taken into consideration;
- Includes evidence of support for the proposal by key stakeholders in Project-affected areas, in particular Project affected people themselves;
- Aligns with the rural development priorities of local and regional government, and with TAP's SEI Strategy.
- Includes a strong monitoring component to track progress, financial compliance and performance

A model of assessing the proposals based on weights given to each of the seven aforementioned criteria will be developed. A work plan for implementing the proposal call process is included in Section 7, and is expected to be officially launched in the fourth quarter of second half of 2016.

4.3 Transitional Support

Vulnerable persons are defined by the EBRD as those who, “by virtue of gender, ethnicity, age, physical or mental disability, economic disadvantage, or social status, may be more adversely affected by land access than others, and who may be limited in their ability to claim or take advantage of displacement assistance and related development benefits”.

Further, standards require that particular attention be paid to the needs of the poor and vulnerable in displacement planning. Project proponents are expected to identify individuals and groups whose welfare may be differentially or disproportionately diminished by the project because of their disadvantaged or vulnerable status; and where such groups are identified, propose and implement measures to mitigate adverse impacts on these groups. Projects that do not undertake these types of interventions raise the risk of exacerbating existing vulnerability and even creating new poverty.

Vulnerability may be either pre-existing (present in a Project Area prior to the start of Project activities) or Project-induced (a result of Project activities). There are also instances where a person already considered vulnerable experiences a worsening of their situation as a result of a Project. The Transitional Support component of LATS is aimed at individuals and households at a higher risk of experiencing negative impacts as a result of TAP's land easement and acquisition program.

LEA teams have been accommodating PAPs with pre-existing vulnerability status with respect to health challenges, mobility and comprehension issues throughout the Census and Asset Inventory (CAI) and Secure Land



Access (SLA) process. This assistance has taken a number of forms including information meetings and contract signing with PAPs in their homes and in the presence of family members and others within the PAP's support network. LEA has also assisted PAPs with transportation to banks to meet with notaries and to process compensation payments. In this next phase of construction, PAPs who might require special assistance with the land entrance and exit process will be identified, and their needs accommodated. A 'Vulnerable Household Watch List' has been developed to assist with the continuous identification and monitoring of those PAPs requiring special accommodations, and/or considered to be at an elevated risk of being more adversely affected by the land access process than others. The list currently identifies almost 200 PAPs, it has been compiled based primarily on flagging households within the LEA census and socio-economic database using the vulnerability assessment tool described in [Table 2], and through informal referrals from the Cadastral Survey Office staff and CAI + SLA teams. (see Annex 1 for Watch List Database Structure).

The Transitional Support program has four main aspects, as illustrated in **Figure 3**. It will be implemented through a third party organization experienced in working with vulnerable groups in LEA-affected Project areas.



Project proponents are expected to identify individuals and groups whose welfare may be differentially or disproportionately diminished by the project because of their disadvantaged or vulnerable status;



Figure 3
Transitional Support
Program for Vulnerable PAPs

Vulnerable Watch List

Establish criteria for identifying potentially vulnerable Project-affected people/ households (PAH), formalize referral process + continuously update Watch List

Screening and Home Visit Assessment

Implementing agency reviews watch list and contacts eligible PAHs to gather further information on vulnerability, special needs and recommends individualized transitional support plans

Eligibility Committee Review

LEA reviews + approves implementing agency's recommendations for transitional support

Provision of Support & Follow-up

Forms of support will be tailored to each PAH and their progress in becoming self-sufficient monitored





LEA will review the findings of the house-hold assessments and ensure appropriate approval from TAP is secured, for cases where referral to an existing service provider and future follow-up is not sufficient, and exceptional assistance is being recommended.



4.3.1 Screening Process

PAPs/PAHs who receive a home visit, will undergo a more formal and confidential screening and assessment process to gather information on the following:

- Circumstances of the household including details on the challenges they face, and potential impacts resulting from TAP's land access and acquisition activities, particularly with respect to food security;
- Details on the implications of vulnerability, including: mobility issues, comprehension capacity, level of available social support;
- Conclusion on categorisation as vulnerable and recommendations regarding proposed forms of transitional support.

Individualized support plans will consider the following types of assistance.

- Monitoring access, support requirements and/or prioritization in the land reinstatement process, live-livelihoods assistance programs and linkages to other project benefits (i.e. Community Investment initiatives);
- Where specific benefits provided by Government or other institutions may exist that affected PAPs are unaware of or have been unable to secure, provide assistance in reviewing with the relevant organisations their eligibility for such social benefits and in submitting applications for consideration;
- Exceptional assistance for a defined transition period where there is a high risk to a household of experiencing hardship as a result of the TAP Project (where appropriate, the Household Food Insecurity Access Scale (HFIAS) can be used as a method of assessing and monitoring changes to the level of food insecurity within a vulnerable household).

No decisions on eligibility will be made during the Home Visit. Rather, it will be an information gathering exercise based on an assessment tool developed by the implementing agency contracted to deliver this program. This will be clearly communicated to the household. LEA will review the findings of the house-hold assessments and ensure appropriate approval from TAP is secured, for cases where referral to an existing service provider and future follow-up is not sufficient, and exceptional assistance is being recommended.



4.4 Land Titling and Registration Assistance Program

A program has been established to assist PAPs who require support in proving their legal land rights that would allow them to receive compensation that has been deposited by TAP in the Consignment De-posit and Loans Fund (CDLF) in accordance with applicable legislation.

More specifically this program is aimed at PAPs who have given their consent to the signing of a voluntary agreement with TAP but who are unable to complete the contract signing process because of a number of legal issues for example non-stable title deeds or title roots of the owner of the affected parcel such as usucaption or the existence of encumbrance or either legal defects or claims on the land parcel. In some cases the PAP lacks the minimum required documents for the signing of a voluntary

agreement (i.e. tax certificate, certificate for the existing buildings on the land parcel etc.):

The forms of assistance which TAP is providing as part of this program include:

- a. Commencement** of the Recognition of beneficiaries procedure at TAP's expense by submitting to the competent Courts of First Instance or to the competent Administrative Committees, according to articles 26 and 27 of the Greek Expropriation Code the necessary applications so that PAPs could be recognized as the compensation's beneficiaries.
- b. Submission** of formal requests to the respective official authorities of the State and to the Supreme Court of Justice for the expedition of the hearing days of the aforementioned applications and the expedition of courts' or committees' ruling. TAP's request is based on the fact that the Project is defined as a Project of Common European and Public Interest.
- c. Collection** of all the necessary documents of the PAPs and submission to the CDLF in order for the CDLF to proceed with the bank transfer of the compensation amounts to PAPs' personal bank accounts.

5. Linkages to project benefits and opportunities



The LEA team will work with TAP's Social and Environmental Investment (SEI) || to ensure Project-affected people are explicitly identified and included in any communication or stakeholder engagement strategy. LEA monitoring will include collecting project data where possible from the SEI team which tracks the participation of people and communities directly affected by LEA in SEI projects, in particular those PAPs considered 'vulnerable'.

The LEA team will review Contractor employment and training implementation plans to better understand how they intend to recruit workers from local communities, and provide input to on the communication strategy to ensure members of Project-affected households, in particular youth and local professionals, are informed of how these opportunities can be accessed.





6. LATS Disclosure

The LATS program will be presented at a series of meetings with key stakeholders (including community meetings with PAPs) and a brochure developed and distributed. It will be uploaded to the TAP website, and will be made available at all TAP regional offices in the local language.

8. Annex 1

Watch List Date Base

The Structure of the database for vulnerable PAPs to be included and monitored during the Transitional Support programme.

	Fields	Contents of the field	Type of data
Personal Data	BEN ID	Beneficiary's (PAP's) ID	Number
	Surname		Text
	Name		Text
	Sex	1 = Male 2 = Female	Number
	Birth year		Number
	Vulnerability Category	Code for categories (to be decided)	Number
	Vulnerability	Description	Text
	Household	Members of the household	Number
	Community/Town/City	Name of community where PAP lives	Text
	Municipality		Text
	Address		Text
	Prefecture		Text
	Residential category	R = Rural U = Urban	Text
	CLI	Community's Livelihood Indicator	Number
	Ownership of other land	1 = YES 0 = NO	Number
	Contact details	Telephone numbers	Text
	Compensation received	Total compensation – €	Number
Next of kin contact details		Text	
Parcel's Data	KATAP	Affected Parcel's TAP cadastral number	Number
	Parcel's Location	Community's name	Text
	Community's ID	ID (Ministry of Internal Affairs code)	Number
	Municipality (where parcel belongs)	Name	Text
	Prefecture (where parcel belongs)	Name	Text
	Parcel's area	Total area in sqm of the affected parcel	Number
	% of the land affected by RoW	Percentage	Number
	% of the land affected by zone A	Percentage	Number
	Type of cultivation	1 = Annual 2 = Perennial (trees)	Number
	REMARKS		Text
	Comments		Text

For more information,
please visit our website
www.tap-ag.gr

Project Office in Thessaloniki
5 Ag. Georgiou Street, 57001, Pilaia, Thessaloniki
Tel.: +30 231 600 6876
Email: konstantinos.tzanas@tap-ag.com